



**PARTNER  
SURYA**



**SARANA  
ENERGI  
INVESTAMA**

# 2024 COMPANY PROFILE

[www.partnersurya.id](http://www.partnersurya.id)

**PT. SARANA ENERGI INVESTAMA**

GREEN SEDAYU BIZPARK CAKUNG GS 9A NO. 21  
JL. CAKUNG CILINCING TIMUR RAYA KM ,  
EAST CAKUNG, CAKUNG, JAKARTA 13910



+62 811-1906-6663



[partnersurya@seinvestama.com](mailto:partnersurya@seinvestama.com)



[www.partnersurya.id](http://www.partnersurya.id)

# PARTNERSURYA

## SOLAR EPC COMPANY OF YEAR 2024 - C&I

\*awarded by Solar Quarter South East Asia

PARTNERSURYA, a prominent business unit within PT Sarana Energi Investama, brings a wealth of experience spanning four years in the solar industry. Our highly qualified team is composed of electrical and mechanical engineers with a strong proficiency in designing, supplying, and executing precise solar panel installations.

At PARTNERSURYA, we don't just install solar panels; we are committed to fostering trust and collaboration with solar panel developers. We are passionate about sharing valuable insights and the extensive benefits of solar power with businesses across Indonesia. Our dedication to providing a seamless, one-stop solution makes us the ideal choice as your EPC partner. Trust us to bring your solar panel projects to life with expertise and excellence.

***"We are a great option to choose"***

Choosing us as your 'first choice' means entrusting your solar panel EPC needs to a team dedicated to excellence. Our unwavering commitment to delivering a comprehensive one-stop solution for all your solar projects ensures that you'll have a reliable partner by your side every step of the way. We are here to not only meet but exceed your expectations, making us the most reliable choice for developers looking to harness the power of solar energy effectively and efficiently.

- Certified and experienced Engineers
- Fully equipped and calibrated Electrical & Mechanical Tools
- Commitment to schedule
- Commitment to alleviate the stress from your project - at least in terms of national electrical and mechanical services!
- Flexibility
- National Scale
- Highly responsive
- Willing to go the extra mile to deliver quality work and service
- Competitive pricing



# WHY CHOOSE US?

Partnersurya.id

## WHY CHOOSE US?

*Our well-established workforce and long-standing reputation for quality, reliability and the ability to understand customer's needs makes PartnerSurya a real Profesional Solar EPC leader in the industry.*



### ENGINEERING EXPERTISE

With Our Solar Expert to lead the design process, we bring unique talent and ability to all projects. Our team consists of various multi-disciplinary, and helps your solar company to grow even better



### BUDGET CONTROL

We use the combination of our Value Engineering, constructability review and estimating capabilities to allow us to help keep control of the project's budget. We can accurately anticipate cost, while providing alternative cost-saving suggestions to help keep the project within budget.



### ESTIMATING & BUDGETING

Our extensive project partnering and design/build experience has given us the opportunity to expand our estimating expertise beyond the traditional take-off used for plan and spec work.



### EFFECTIVE INSTALLATIONS

Sarana Energi Investama has a highly trained and motivated merit shop crew of electricians to ensure a cost-effective and quality installation. We have the availability of trained and competent electricians to allow us to fill the crew size at optimal levels throughout the project's timeline.



### FOLLOW-UP SERVICE

We take great pride in offering excellent customer service. No job is done until the customer is satisfied with the final product. We offer a professional attitude and take great pride in our work. Our customers have at their disposal a full range of top-quality services for successful projects as well as normal ongoing maintenance. From 24 hour emergency service to preventive maintenance, Van Haren Electric takes pride in their ability to service.



### VALUE ENGINEERING

To maximize the effectiveness of our approach to how we do business, we at Van Haren Electric believe we must first obtain and understand the design intent. We will then work with the engineering firm, owner's representatives and general contractor to identify and review alternatives that meet the projects needs. Serving as a team member to provide Value Engineering support is very common for us.



# OUR ONE STOP SOLUTION



## Engineering

- Site survey service
- Power Quality Analysis
- Design system consultant
- PVsyst and Helioscope



## Procurement

- SOLAR MODULE
- INVERTER & BATTERY
- SOLAR CABLE & ACCESORIES
- PANEL MAKER / BUILDER



## Construction

- All In One Installation Service



## Maintenance

- Maintenance Service
- Reparation Solar Panel



## Energy Monitoring System

- Remote Monitoring System
- Billing System

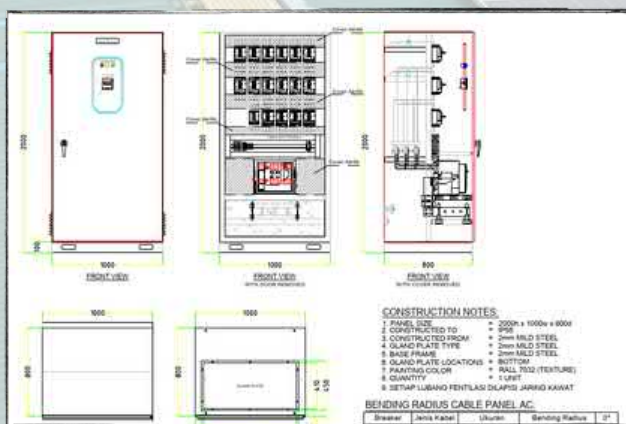
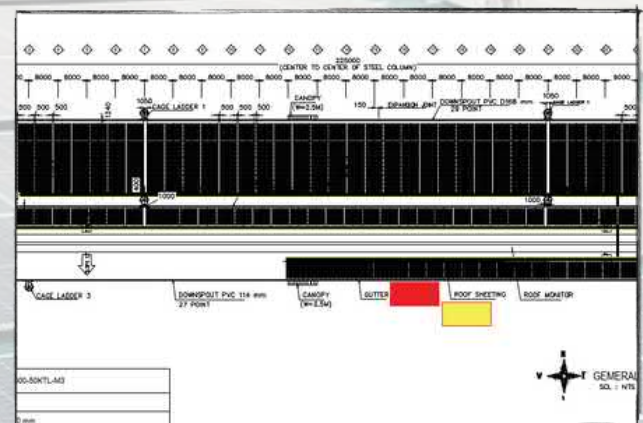
# ENGINEERING

We are pleased to offer the following services completely free of charge:

- Site survey service
- Power Quality Analysis
- Design system consultancy
- PVsyst and Helioscope software assistance
- Our commitment to providing these services at no cost demonstrates our dedication to supporting your solar projects with expertise and added value



System summary			
<b>Grid-Connected System</b>		<b>Tables on a building</b>	
<b>PV Field Orientation</b>		<b>Near Shadings</b>	<b>User's needs</b>
Fixed planes	4 orientations	Linear shadings	Unlimited load (grd)
Tilt/azimuths	10 / 20 °		
	10 / 85 °		
	12 / -12 °		
	8 / 172 °		
<b>System information</b>			
<b>PV Array</b>		<b>Inverters</b>	
Nb. of modules	1156 units	Nb. of units	11 units
Prom total	636 kWp	Prom total	520 kWac
		Prom ratio	1.223
<b>Results summary</b>			
Produced Energy	959.0 MWh/year	Specific production	1508 kWh/kWp/year
		Perf. Ratio PR1	80.91 %
<b>Table of contents</b>			
Project and results summary			2
General parameters, PV Array Characteristics, System losses			3
Near shading definition - Iso-shadings diagram			6
Main results			8
Loss diagram			9
Special graphs			10
P50 - P90 evaluation			11
CO <sub>2</sub> Emission Balance			12



# PROCUREMENT

**PARTNERSURYA is your one-stop solution for all your solar project procurement needs. We specialize in sourcing high-quality products for your solar endeavors, offering an extensive range of items including:**

- **Solar Modules**
- **Inverters & Batteries**
- **Solar Cables & Accessories**
- **AC DC Combiner Panel Manufacture**
- **Remote Monitoring System**

**Our commitment to excellence ensures that you'll receive top-tier products to power your solar projects, all conveniently sourced through our efficient procurement services. With PARTNERSURYA , your solar aspirations are just a step away from becoming a reality."**

SOLAR MODULES	
INVERTER	
CABLING	
AC DC COMBINER PANEL	<p>We Manufacture the Electrical Panel</p> 
REMOTE MONITORING SYSTEM	

# CONSTRUCTION

**PARTNERSURYA excels in the provision of All-In-One Solar System Installation Services, catering to diverse sectors, including residential, industrial, and commercial properties. Our team comprises certified and experienced solar engineers, and we take immense pride in our team members holding Competencies Certificates, HSE Officer qualifications, Ahli K3 Listrik (Electrical Safety Expert) certifications, and TKBT Certificates.**

**Our unwavering dedication to safety, quality, and compliance has been the cornerstone of our success. We are proud to state that, to date, we have consistently met and exceeded the scheduling targets set by our clients. We are committed to delivering on our promises, ensuring that all our projects are completed on time and with the utmost focus on safety.**

**With PARTNERSURYA , you can have absolute confidence in our proficiency and our steadfast commitment to providing superior solar solution**



# MAINTENANCE & REPAIR SERVICES

**Why Choose PARTNERSURYA Solutions for Your Solar Panel Maintenance Needs?**

**PARTNERSURYA Solutions stands out for its commitment to providing top-tier solar panel maintenance services. Our accredited team boasts a diverse skill set, enabling us to approach your maintenance needs with a friendly and knowledgeable demeanor while upholding the highest professional standards. With our dedicated maintenance, you can trust that your solar panels will consistently perform at their peak.**

**But that's not all we offer. Beyond maintenance, we are your comprehensive solar solutions provider. Whether you need installation, repairs, or system upgrades, our experienced team has you covered.**

**We go the extra mile by equipping our team with state-of-the-art diagnostic tools, including Power Quality Analysis, Infrared Thermography, and the Solar Complete PV Tester, ensuring we provide thorough and precise assessments of your solar PV system.**

**Discover the transformative impact our skilled team can have on your solar PV panel system.**



# ENERGY MONITORING SYSTEM

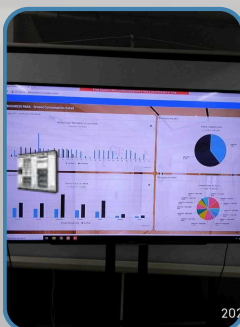
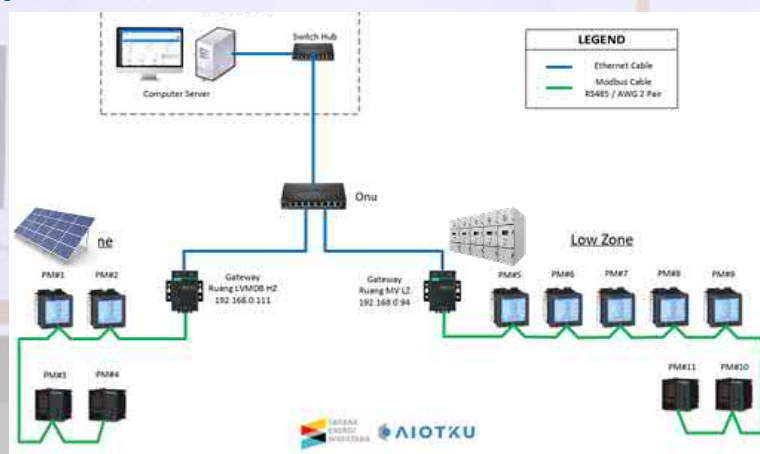
## AIOTKU SOLO- Solar Logger

### Your Comprehensive Feed-In Management Solution

Congratulations! You've been entrusted with the installation and setup of a photovoltaic system by your customer. When it comes to this exciting endeavor, AIOTKU SoLo is your steadfast companion right from the outset. We stand by your side, offering complete solutions for feed-in management, monitoring, and energy management. We provide you with the expertise, cutting-edge products, and software essential for solar energy generation. Complementing our offerings is our unwavering support, readily available in case of any emergencies, ensuring your project's success.

### AIOTKU SoLo Benefits in a Nutshell:

- A manufacturer-independent system ensuring maximum compatibility with third-party systems and loggers.
- Flexible hardware and software modules that allow for customized system solutions.
- A simple plug-and-play approach for a smooth commissioning process.
- Our solutions facilitate effortless coordination of various smart energy systems through standardized interfaces.
- Our innovative Aiotku SoLo enables efficient error analysis, malfunction detection, and swift error message delegation.
- With our services and support, you can save valuable time and enhance the experience for your customers.



# OUR MILESTONES

Partnersurya.id

UPDATED OCTOBER 2023



6

YEARS OF EXPERIENCE



50+

PROJECT PER YEAR



20+ MW

ACCUMULATED AGUST 2024



25

EXPERT ENGINEER



36.000++

MORE THAN SOLAR PANEL  
INSTALLED



600.000++

EQUALS TREES PLANTED



# OUR PROJECT REFERENCES



Partnersurya.id

**MOROWALI (300 KWP)**


- Hybrid System

**NICKEL INDUSTRIES** 6,966 followers  
2w · 🌐

This collaboration with PT Sumber Energi Surya Nusantara (SESNA Group) is another step towards continuing to grow our renewable energy mix and reduce our carbon emissions.

Read the article here:  
[https://lnkd.in/g-BxW\\_R](https://lnkd.in/g-BxW_R)

#nickelindustries #sesna #solarpv #renewableenergy



NIC dan SESNA komitmen hasilkan nikel ramah lingkungan dengan PLTS



# OUR PROJECT REFERENCES



Partnersurya.id

**KARAWANG (3,2 MW)**

- On Grid System



**PT Sumber Energi Surya Nusantara (SESNA Group)**  
8,391 followers  
9mo • Edited •

Sustainability is an innovation and growth opportunity for the chemicals industry. **PT Indorama Polypet Indonesia (IPPI)**, as one of the leader in chemical industry in Indonesia, is running some sustainability programs by actively reducing reliance on conventional energy and increasing renewable energy sources usage.

Supporting IPPI's vision, SESNA Group provided a best solution by implementing solar energy system on IPPI's production facilities. With more than 1.3 MWp of installed capacity, hopefully this green energy source can be a reliable and efficient investment, so as IPPI can accomplish as a top sustainable company in chemical business.

#business #renewableenergy #solarenergy #sustainability #investment #chemicalindustry



Solar Energy System Cooperation - SESNA Group x Indorama Polypet Indon...

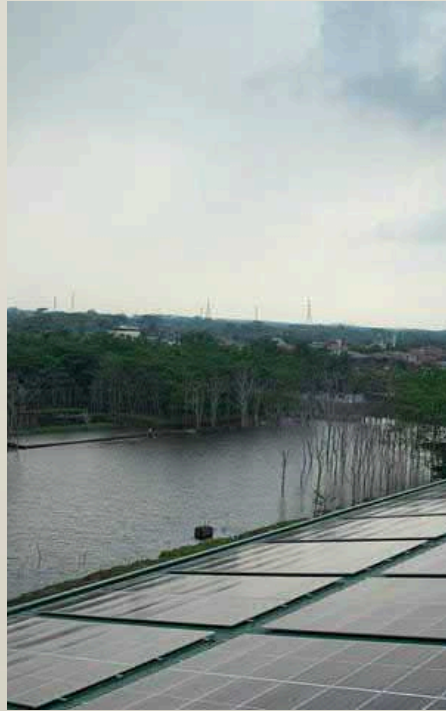
Partnersurya.id

## INDORAMA CILEGON (1,3 MW)

- On Grid System



# OUR PROJECT REFERENCES



Partnersurya.id

**PURWAKARTA (1 MW)**

- On Grid System



Partnersurya.id

**NGANJUK , 862,4 KWP  
JAWA TIMUR**

- On Grid System

# OUR PROJECT REFERENCES



Partnersurya.id

**CHAROEN POKPHAN  
CURUG  
( 61,6 KWP)**

- On Grid System



Partnersurya.id

**CHAROEN POKPHAN  
SUMEDANG PHASE 1  
(90 KWP)**

- On Grid System



# OUR PROJECT REFERENCES



Partnersurya.id

**SUPERINDO 25 LOKASI**

- On Grid System



# OUR PROJECT REFERENCES



Partnersurya.id

BCA 18 LOKASI

- On Grid System



# OUR PROJECT REFERENCES



Partnersurya.id

SAUH BAHTERA - 53,9 +  
125,35 KWP

- On Grid System



# OUR PROJECT REFERENCES

Partnersurya.id

TRANS STUDIO MAKASSAR 2,6 MW



# OUR PROJECT REFERENCES

Partnersurya.id

LELCO



# OUR PROJECT REFERENCES

Partnersurya.id

SSWP - JAPAN MANUFACTURE



# OUR PROJECT REFERENCES

Partnersurya.id

SITE HITACHI ASTEMO 132 KWP

**HITACHI Astemo**



# OUR PROJECT REFERENCES



Partnersurya.id

**SITE MAROS 213.12**  
**KWP**  
**MAKASSAR**

- On Grid System



Partnersurya.id

**SITE SAMATOR 266,04**  
**KWP**  
**BATANG - MID JAVA**

- On Grid System



# OUR RESIDENTIAL PROJECT REFERENCES



Partnersurya.id

## RESIDENTIAL AREA :

- JAKARTA PUSAT (1,5 KWP)
- PEJATEN (63,7 KWP)
- KEBON JERUK (13 KWP)
- SAWAH BESAR (8,9 KWP)
- PONDOK INDAH (21 KWP)
- SENTUL (10 KWP)







# OUR ENGINEERS CERTIFICATE



- Sertifikasi diatas hanya sebagian dari peralatan kami , silahkan request sertifikat yang dibutuhkan ke tim kami
- Per tahun kami selalu mengkalibrasi ulang peralatan kami

# OUR CERTIFIED TOOLS

Partnersurya.id

ALL FULL TESTING TOOLS FOR SOLAR  
EQUIPMENT FROM SURVEY , INSTALLATION  
& MAINTENANCE

- Seaward Electronic – Solar Utility Pro 50P-2878
- Thermal Imager – Fluke Ti450
- Thermal Imager – Fluke Ti400
- Insulation Resistance – Kyoritsu KEW 3125
- Torque Wrench - Tonichi QL100N4
- Clamp Meter – Fluke 376
- Multimeter Digital – Fluke 117
- Power Quality Analyzer – Hioki PQ3100
- Clamp Meter – Kyoritsu KEW SNAP
- Digital Earth Tester –Kyoritsu, KEW 4105A
- Omicron CMC 356 - Universal Relay Test
- Omicron CPC 100 - Universal Primary Injection
- And Others



# OUR TOOLS



- The certifications above are only a part of our equipment; please request the necessary certificates from our team.
- Each year, we recalibrate our equipment

# OUR ELECTRICAL PANELS

Partnersurya.id

**PARTNERSURYA** doesn't just provide electrical panels; we're your promise of a seamless end-to-end electrical system. From expertly engineered DC and AC Combiner Panels to forging connections within Low and Medium Voltage Grids, we pledge to bring your projects to life with precision and excellence. Unleash your electrical potential with **PARTNERSURYA** - where your vision meets our commitment to electrifying success.

## LOW VOLTAGE SYSTEM

- DC Combiner
- AC Combiner

## MEDIUM VOLTAGE SYSTEM

- MV Cubicles
- Transformer
- Substation Solar E-house



# OUR SOFTWARES

Partnersurya.id

WE USE UPDATED TECHNOLOGY TO DESIGN AND  
SIMULATE THE SOLAR GRID

- HelioScope: Advanced Solar Design Software
- PVsyst
- Autodesk AutoCAD®
- Solidworks
- AIOTKU - Remote Energy Monitoring System



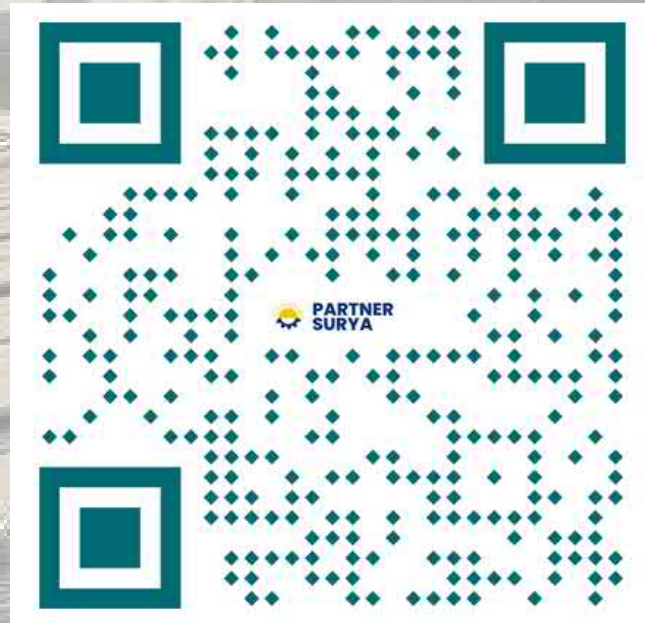


**PARTNER  
SURYA**



**SARANA  
ENERGI  
INVESTAMA**

# VISIT OUR WEBSITE



**NEED FURTHER EXPLANATION?  
CONTACT OUR MARKETING TEAM**

+62 811-1906-6663  
or scan



[www.partnersurya.id](http://www.partnersurya.id)



[partnersurya@seinvestama.com](mailto:partnersurya@seinvestama.com)



[@partnersuryaid](https://www.instagram.com/partnersuryaid)  
[@saranaenergiinvestama](https://www.instagram.com/saranaenergiinvestama)

## CONTACT US

PT. SARANA ENERGI INVESTAMA  
Green Sedayu Bizpark Cakung GS 9A No. 21 Jl. Cakung  
Cilincing Timur Raya KM Jl. Cakung Cilincing Timur Raya KM,  
East Cakung, Cakung, Jakarta 13910

[WWW.PARTNERSURYA.ID](http://WWW.PARTNERSURYA.ID)